

# CATALOGUE

---



**PACIFIC PREFAB HOME PNG**

BUILD SMART, LIVE INSPIRED



# ABOUT US

Pacific Prefab Home PNG specializes in the design and construction of high-quality prefabricated homes that offer affordability, durability, and modern living solutions. As a subsidiary of YES Management Group, we are committed to providing fast and efficient housing solutions that cater to the diverse needs of homeowners in Papua New Guinea.

## WHY CHOOSE US?

- **Quick Installation:** Our prefab units are designed for fast and easy assembly, reducing construction time significantly.
- **Quality Materials:** We use durable, high-quality materials to ensure longevity and structural integrity.
- **Modern Designs:** Our homes feature contemporary layouts tailored for comfort and functionality.
- **Cost-Effective Solutions:** Prefab homes offer a more affordable alternative to traditional construction methods.

At Pacific Prefab Home PNG, we are committed to transforming the housing landscape in Papua New Guinea with innovative, sustainable, and efficient housing solutions.

---

## ADDED VALUE OPTIONS FOR YOUR PREFAB HOME PURCHASE

**Complimentary Site Inspection** – Let us assess your location to ensure the best fit for your new home, at no extra cost.

**Flexible Chattel Packages** – Choose the interior and exterior fittings that suit your lifestyle and budget.

**Exclusive Installation Contractor Package** – Enjoy seamless setup by certified professionals, available only through our partner network.

**Easy Financing with TISA Bank** – Secure your dream home with tailored loan options and competitive rates.

**10-Year Structural Warranty** – Every unit is backed by a decade of guaranteed quality and durability.





PACIFIC PREFAB HOME PNG  
BUILD SMART. LIVE INSPIRED

**OWN YOUR  
OWN HOUSE  
TODAY**

# PPH-199

4 BEDROOM +  
ENSUITE & BALCONY

FIRST FLOOR 16.88 SQM | SECOND FLOOR 129.06 SQM  
BALCONY 36.29 SQM STAIRS 7.32 SQM  
TOTAL AREA 199.55 SQM

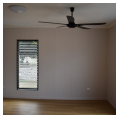


4



2

@K450,000.00





## OVERVIEW OF COMMON MATERIALS USED IN HOUSE CONSTRUCTION.

### STRUCTURAL MATERIALS

Steel frame for foundations, walls, and floors, due to its durability.

- Column, Beam & Purline

### WALL MATERIALS

LIGHT STEEL FRAME (WALL)

- Wall Panel System

EXTERIOR WALL COMBINATION

- Exterior wall FC board, Calcium silicate board & Aluminum foil foam insulation

INTERNAL WALL COMBINATION

- Calcium silicate board
- WPC wall panel

### ROOFING MATERIALS

LIGHT STEEL FRAME (ROOF)

Roof Truss System

Roof(Finishes)

PPGI steel roofing tile, Aluminum foil foam insulation & Aluminum gutter.

### FINISHING MATERIALS

INTERNAL CEILING

- WPC wall panel

FLOOR

- FC board, SPC flooring

### WINDOWS AND DOORS

ALUMINUM WINDOW

- Glass shutters + security net
- MDF Door

### TOILET & BATHROOM

- Close-Coupled Toilet
- Double basin sink

# PPH-135

3 BEDROOM  
WITH STUDY

FIRST FLOOR (TOILET & LAUNDRY) 20.56 SQM  
SECOND FLOOR 95.08 SQM STAIRS 7.96 SQM BALCONY 12.68  
SQM TOTAL AREA 136.28 SQM

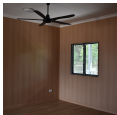


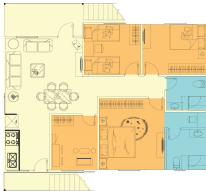
3



2

@K360,000.00





## OVERVIEW OF COMMON MATERIALS USED IN HOUSE CONSTRUCTION.

### STRUCTURAL MATERIALS

Steel frame for foundations, walls, and floors, due to its durability.

- Column, Beam & Purline

### WALL MATERIALS

LIGHT STEEL FRAME (WALL)

- Wall Panel System

EXTERIOR WALL COMBINATION

- Exterior wall FC board, Calcium silicate board & Aluminum foil foam insulation

INTERNAL WALL COMBINATION

- Calcium silicate board
- WPC wall panel

### ROOFING MATERIALS

LIGHT STEEL FRAME (ROOF)

Roof Truss System

Roof(Finishes)

PPGI steel roofing tile, Aluminum foil foam insulation & Aluminum gutter.

### FINISHING MATERIALS

INTERNAL CEILING

- WPC wall panel

FLOOR

- FC board, SPC flooring

### WINDOWS AND DOORS

ALUMINUM WINDOW

- Glass shutters + security net
- MDF Door

### TOILET & BATHROOM

- Close-Coupled Toilet
- Single basin sink

# PPH-93

3 BEDROOM

FIRST FLOOR (LAUNDRY) 5.52 SQM  
SECOND FLOOR 77.83 SQM, STAIRS 7.00 SQM  
TOTAL AREA 89.55 SQM

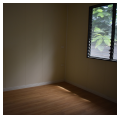


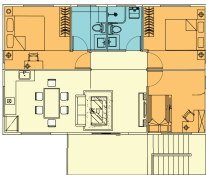
3



2

@K290,000.00





## OVERVIEW OF COMMON MATERIALS USED IN HOUSE CONSTRUCTION.

### STRUCTURAL MATERIALS

Steel frame for foundations, walls, and floors, due to its durability.

- Column, Beam & Purline

### WALL MATERIALS

#### LIGHT STEEL FRAME (WALL)

- Wall Panel System

#### EXTERIOR WALL COMBINATION

- Exterior wall FC board, Calcium silicate board & Aluminum foil foam insulation

#### INTERNAL WALL COMBINATION

- Calcium silicate board
- WPC wall panel

### ROOFING MATERIALS

#### LIGHT STEEL FRAME (ROOF)

##### Roof Truss System

Roof(Finishes)

PPGI steel roofing tile, Aluminum foil foam insulation & Aluminum gutter.

### FINISHING MATERIALS

#### INTERNAL CEILING

- WPC wall panel

#### FLOOR

- FC board, SPC flooring

### WINDOWS AND DOORS

#### ALUMINUM WINDOW

- Glass shutters + security net
- MDF Door

### TOILET & BATHROOM

- Close-Coupled Toilet
- Single basin sink



# BENEFITS OF FABRICATION

## LOW COST

- The cost is relatively LOW at approximately K2,000/Sqm primarily due to most work being completed in the factory. This approach:
  - Minimizes on-site complexity
  - Reduces labor costs
  - Minimizes material waste
- The Traditional Reinforced Concrete Building cost is relatively high, and it usually takes more than K4,500/Sqm.

## CONSTRUCTION TIME

- Fast construction speed.  
E.g. A high stand 4 bedroom home can be completed in 60 days.
- The Traditional Reinforced Concrete Building takes Long Construction Period.  
It usually takes years; from foundation to completion. The process is complicated and is easily affected by weather and other factors.





# BENEFITS OF FABRICATION

## DURABILITY

- **Fabricated Housing** provides a quality guarantee of up to 70 years, with good structural strength and stability.
- **Has the ability** to withstand certain external impacts and natural environmental tests.
- **Traditional reinforced concrete building** it has good durability. Does not need regular maintenance and repair under normal use conditions.



## CONVENIENCE

- **The convenience is relatively high.** Most of the work is completed in advance in the factory. On the construction site, only simple assembly is needed; shortens the house - building period & can quickly provide housing for people.
  - The production and assembly of its components all follow strict standards & specifications. where quality is guaranteed.
- **TRADITIONAL REINFORCED CONCRETE BUILDING**
  1. **The convenience is relatively low.**
  2. **Construction process is complex;** needs to be built onsite where each process is closely connected.
  3. **Once a problem occurs in a certain link,** it is very likely to delay the construction period.
  4. **Construction is greatly affected by natural conditions** such as weather.



## FOR MORE INFORMATION

PLEASE CONTACT US ON:

+675 7961 3681

info@pphpng.com

PO Box 163, Waterfront Konedobu  
National Capital District,  
Papua New Guinea



PACIFIC PREFAB HOME PNG



PACIFIC PREFAB HOME PNG

